

Tour | Adventure | Nature | Food

BEAUTIFUL
Sundarbans



Table of contents

About Bangladesh	3
Dublar Char	4
Hiron Point	8
Karamjol Wildlife Rescue Center	12
Kotka beach	17
Burirdabri	22

About Bangladesh



Bangladesh, country of south-central Asia, located in the delta of the Padma (Ganges [Ganga]) and Jamuna (Brahmaputra) rivers in the northeastern part of the Indian subcontinent. The riverine country of Bangladesh ("Land of the Bengals") is one of the most densely populated countries in the world, and its people are predominantly Muslim. With the partition of India in 1947, it became the Pakistani province of East Bengal (later renamed East Pakistan), one of five provinces of Pakistan, separated from the other four by 1,100 miles (1,800 km) of Indian territory. In 1971 it became the independent country of Bangladesh, with its capital at Dhaka.

Dublar Char

SUNDARBANS

Dublar Char is a famous island in Sundarbans. It is very much popular place for various types of fish, And some of the fish are very rare. The Hindu communities observe the famous three days long "Rash Mela" in every year.



DUBLAR CHAR



DUBLAR CHAR



DUBLAR CHAR



Hiron Point

SUNDARBANS



Hiron Point, a protected sanctuary in the southern part of the Sundarbans. Another name is Nilkamol. Located on the western bank of the river Kunga, in the Khulna Range. It is a UNESCO World Heritage Site under Sundarbans.

A photograph of a deer with large, multi-tined antlers standing in a field. The deer is facing right. The background consists of a dense line of green trees. A white rectangular box is overlaid on the image, containing the text "HIRON POINT" in green, uppercase letters.

HIRON POINT

A photograph of two spotted deer standing on a rocky path in a forest. The scene is misty and the deer are the central focus. The deer are positioned in the middle ground, facing left. The path is made of large, light-colored rocks. The forest is dense with green foliage, and the background is hazy. A white rectangular box is overlaid on the image, containing the text "HIRON POINT".

HIRON POINT

A photograph of a mangrove forest with several large, gnarled trees standing in shallow water. The water is calm, creating clear reflections of the trees and their dense green foliage. The scene is peaceful and natural. In the center of the image, there is a white rectangular box containing the text "HIRON POINT".

HIRON POINT

Karamjol Wildlife Rescue Center

SUNDARBANS

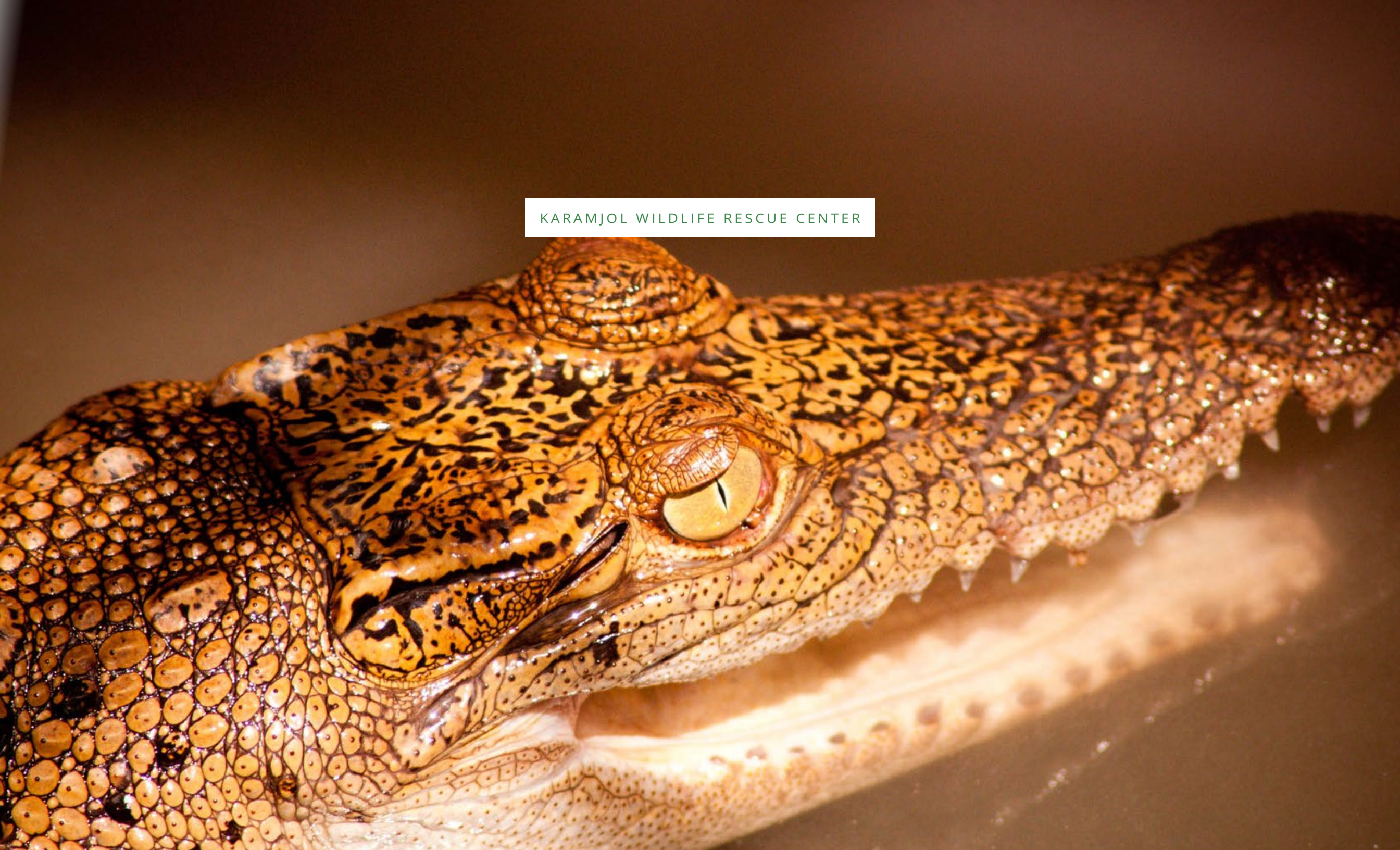


Karamjol Wildlife Rescue Center is one of the wonderful visiting place in Sundarbans. To appreciate and to view the most cherished species of Bangladesh's wildlife, thousands of visitors make their way to Karamjol, a ranger station deep in the forest that also serves as a deer-breeding center.

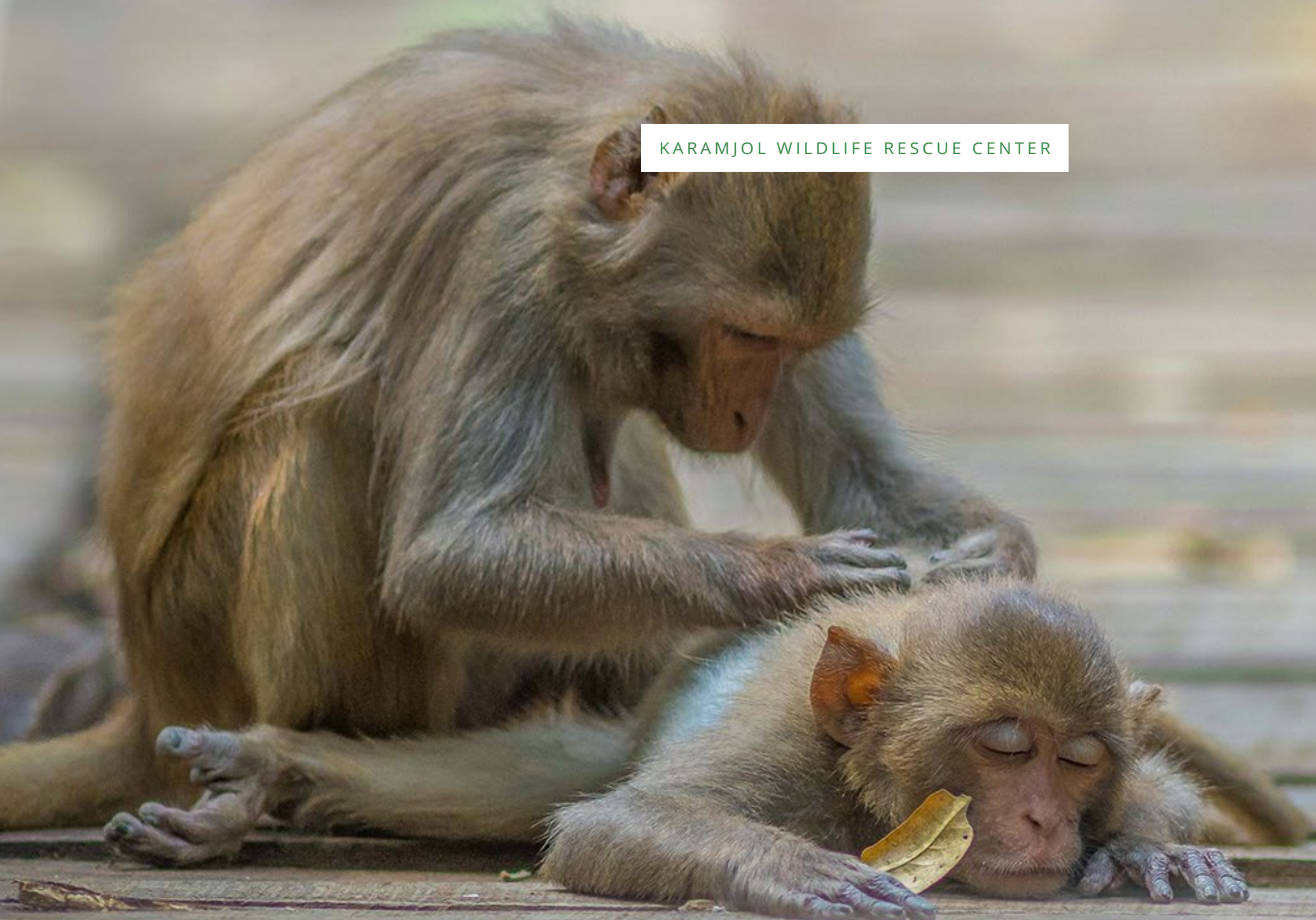
A perspective view of a wooden boardwalk made of dark grey planks, stretching into the distance through a dense forest. The ground is covered with fallen yellow and brown leaves. The boardwalk is flanked by wooden posts and railings. The lighting is soft, suggesting an overcast day.

KARAMJOL WILDLIFE RESCUE CENTER

KARAMJOL WILDLIFE RESCUE CENTER



KARAMJOL WILDLIFE RESCUE CENTER



A Red-whiskered Bulbul is perched on a branch of a tree, surrounded by numerous small, round, red berries. The bird has a distinctive black crest, a white forehead, and a red patch on its cheek. The background is a soft-focus green, suggesting a natural habitat. The text "KARAMJOL WILDLIFE RESCUE CENTER" is overlaid in a white box in the upper right quadrant of the image.

KARAMJOL WILDLIFE RESCUE CENTER

Kotka beach

SUNDARBANS

Kotka beach is one of the beautiful tourist spots among the entire Sundarbans where you can do a jungle trail along with night stay. It is actually a sanctuary area for the wild animals and UNESCO declared world heritage site.



KOTKA BEACH



KOTKA BEACH



A black and white photograph capturing a desolate and somber landscape. The foreground is dominated by a body of water, possibly a lagoon or a flooded area, which reflects the heavy, overcast sky. The water's surface is dark and textured, with some ripples. In the middle ground, a vast expanse of land is covered with numerous dead, skeletal trees. Their trunks are thin and vertical, some standing tall while others are shorter and more jagged. The trees are scattered across the landscape, creating a sense of a once-thriving forest that has been reduced to a wasteland. The background shows a flat horizon line, suggesting a distant shore or a wide expanse of water. The sky is filled with large, dark, and dramatic clouds, adding to the overall mood of the scene. The lighting is diffused, with no direct sunlight, which emphasizes the textures of the water, the dead wood, and the heavy atmosphere.

KOTKA BEACH

KOTKA BEACH

Photography



Burirdabri

SUNDARBANS

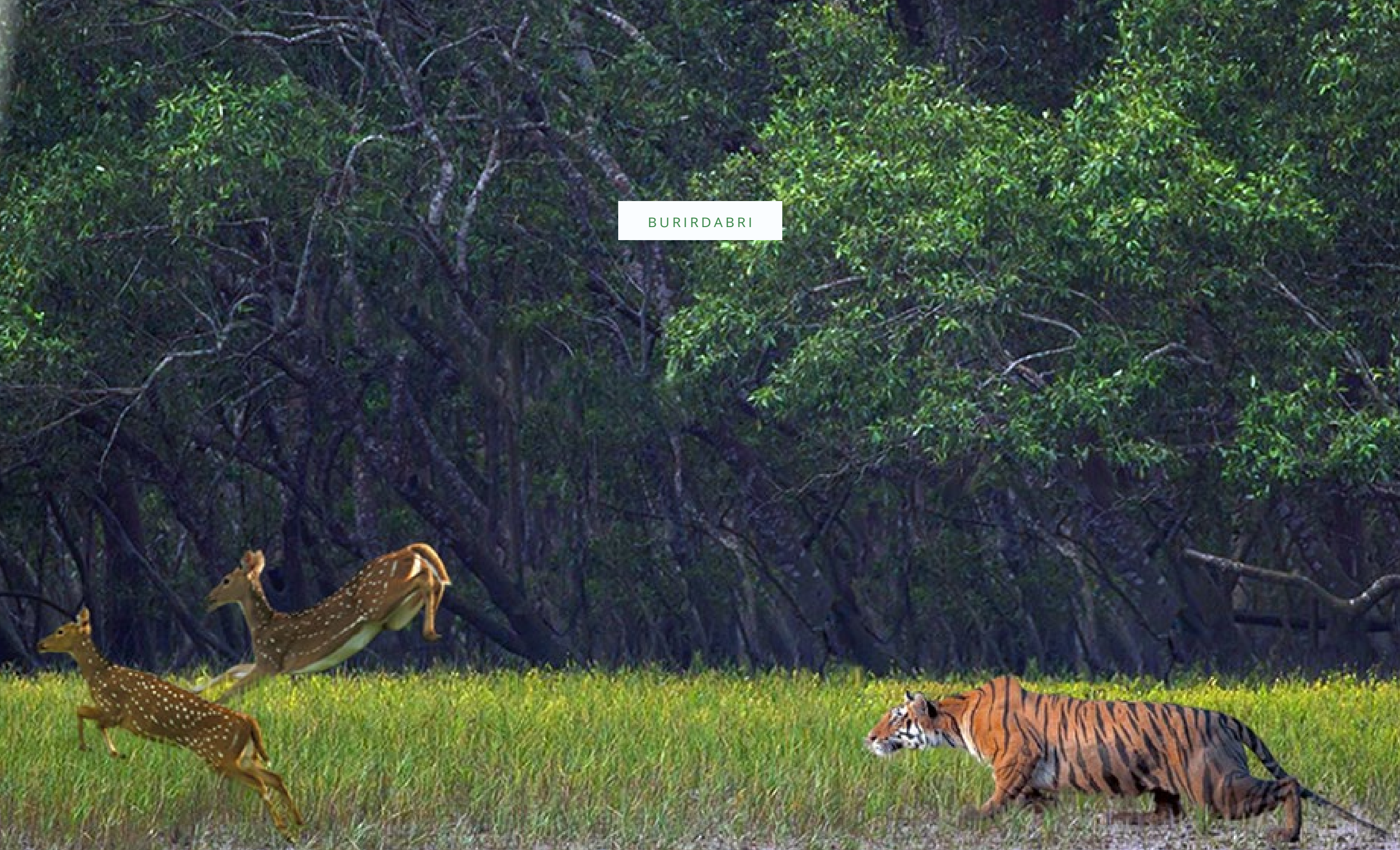


The Burirdabri Forest Camp, or the Burirdabri Beat Eco Tourism Complex falls under the Bashirhat Range of the Sundarbans Tiger reserve. It lies at the easternmost part of Sundarban Tiger Reserve and this Eco-tourism complex was inaugurated in the year 2003.

A vibrant green snake with dark stripes is coiled around a tree branch in a lush, leafy environment. The snake's body is slender and its head is pointed towards the left. The background is filled with green leaves and branches, creating a natural, forest-like setting. The lighting is soft, highlighting the texture of the snake's scales and the surrounding foliage.

BURIRDABRI

BURIRDABRI





Bangladesh Tourism Board

Parjatan Bhaban (Level-9),
Plot: E-5, C/1, West Agargaon,
Sher-E Bangla Nagar (Administrative Area),
Dhaka-1207

Ministry of Civil Aviation and Tourism

Bangladesh Secretariat,
Abdul Gani Road, Dhaka 1000
beautifulbangladesh.gov.bd

